

January 2023

January 12 & 13

Parent Teacher Conf.

Jan. 30-Feb. 3

Exam Week

February 6

2nd Semester Begins

February 7,8,9,10

Grad Photos—Multi

February 8

Grad Mtg Upper Canteen

Grads 10:00 am

Parents 7:00 pm

February 9

2nd Semester Photos

February 17

PD No Classes

February 20

Louis Riel Day No School

March 6

K-12 Admin. Day—No classes

March 27-31

Spring Break

SCHOOLS CLOSED

April 5

Grad Photo Retakes

April 7

Good Friday

SCHOOLS CLOSED

April 20 & 21

Parent/Teacher Conf.

(No Classes April 21)

April 24

K-12 PD No Classes

May 22

Victoria Day

SCHOOLS CLOSED

June 28

Grad

Semester 2 and Timetable Changes

Semester 1 ends on Friday, February 3 and Semester 2 begins on Monday, February 6. Students are reminded to check in with their grade level counsellor if they have any questions about their courses in Semester 2. Students and parents will be notified when the Semester 2 timetables are available. Paper copies will be provided in students' homerooms (Period 1) on Monday, February 6. Homerooms will be posted outside both offices.

Grade 9— Ms. Lori Wood lori.wood@plpsd.net

Grade 10— Mrs. Dana Pruden dana.pruden@plpsd.net

Grade 11— Mrs. Kim Tooth kim.tooth@plpsd.net

Grade 12— Mrs. Marie Bertholet marie.bertholet@plpsd.net

Report Cards

Student report cards will be mailed or emailed home the week of February 21st -24th. Please be sure the main office has your current mailing address and email address.

Fees

All Semester 1 course fees, as well as the \$40 student fee, are past due. If you haven't done so, please send payment as soon as possible. Payment can be made at the school finance office by cash, cheque or debit or by etransfer sent to robin.neufeld@plpsd.net. If you have any questions or concerns about fees please contact the school.



Grad Info



If your graduating student has not booked their grad photos yet please see Mrs. Neufeld at the finance office ASAP as appointments fill up fast. The sitting fee of \$35 must be paid at time of booking, no exceptions. Grad photo dates are February 7, 8, 9, & 10.

All parents of graduating students are invited to a grad meeting on February 8th, 7 pm in the PCI Upper Canteen.

Please reference the "Grad" tab on the PCI website for important information regarding Graduation.



PCI would like to thank Prairie Flax for their generous donation to support our schools DBT / Counselling Program.



Thanks to the thoughtful donation of a local business the Saints Hockey Team was able to forward all door admissions totalling \$610 at the Xmas Classic Tournament in December to the Salvation Army Christmas Hamper Program.

Career Center News

Scholarships and bursaries available outside PCI are listed on the website on the **Post-Secondary page** <http://www.plpsd.mb.ca/pci/postsecondary> . The PCI Scholarship and Bursary Meeting (including application distribution) for any Grade 12 students who are planning to attend university, college or trades training will be held directly after the Grad Meeting on Feb. 8th, 2023 in Per 2 in the Upper Canteen. If you cannot attend this meeting and you would like to apply for these awards, please contact Ms Bousquet in the Career Centre to arrange a meeting.

Stay informed:

Check Grade 12 Google Classroom regularly

Grade 12 students **who** will be attending a post-secondary school are reminded to check on requirements needed. Entrance requirements and requirements for Entrance Scholarships may differ. If you have any questions, please see Ms. Bousquet.

The Career Centre is open and other career supports are available. Please email Ms. Bousquet (kellee.bousquet@plpsd.net) for an appointment.

U of M Open House Fieldtrip: Grade 11 and 12 students who are interested in attending the University of Manitoba Open House on Feb. 23, 2023 can get a permission form in the Career Centre.

PEER HELPERS/PEER LEADERS

The PCI Peer Helpers/Peer Leaders will be completing their winter training session on January 12th at the Red River Campus. The PCI Peer Helpers are a diverse group of 28 students in grade 9-12 who are active in our school community through volunteerism and skills training to help support our peers in a variety of situations. We are looking forward to upcoming opportunities to serve our school and community through the remainder of the school year.



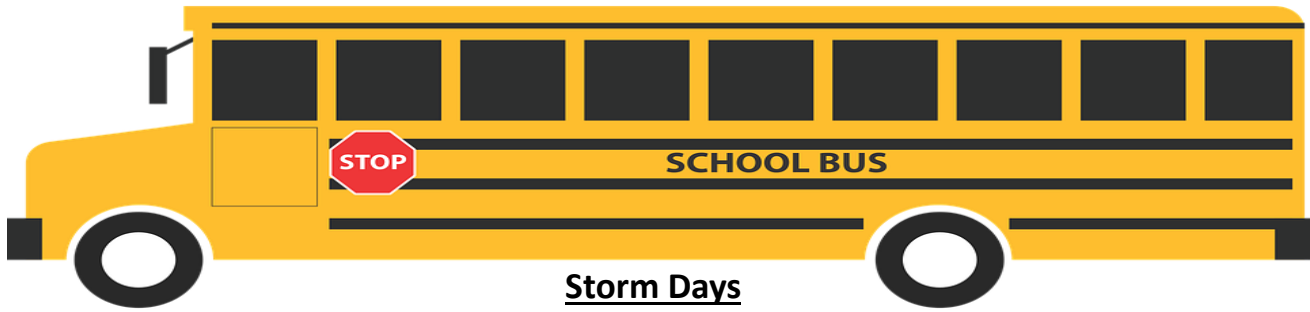
S.O.S

Sources of Strength is a best practice, strength-based youth suicide prevention project that utilizes the power of peer social networks to change unhealthy norms and culture and ultimately prevent suicide, bullying and substance abuse. The program is designed to prevent suicide by increasing help-seeking behaviours and connections between peers and caring adults with a focus on Hope, Help and Strength. PCI Sources of Strength (SOS)

Peer Training was completed the third week of October and a successful SOS Week was held in December. We have an awesome group of about 80 students who will help to continue to improve the climate at PCI by promoting Hope, Help and Strength messages and by developing strengths in themselves and their peers.



SCHOOL BUS UPDATES



Storm Days

If weather conditions are poor, please listen to the radio to determine if the buses are running and/or if the schools are closed. The information is also posted on the Portage School Division web site. If the buses are not running, but the school is open, classes will continue as usual with instruction being offered to those who attend. In the event that buses do not run in the afternoon we ask that the emergency billet information on your student information sheet be updated. We do recognize that not everyone can make it to school because of the inclement

Winter Attire



When students are riding a bus either to travel to or from school or on an extracurricular trip, they must be dressed appropriately for the weather. For students that are not dressed appropriately, the parent will be contacted by the school and the parent will have to pick-up the student after school. It is for safety rea-

Morning Pick Ups

Please ensure that your student(s) are out at the bus stop a few minutes before pick up time so that they are ready to board at pick up time. If you are unsure of your pick-up time please confirm with your bus driver or call the office. Students waiting in their house until the bus arrives adds time to the route, which makes the bus late, and down the line students end



Bus Status Updates

Route # 1
Route # 2
Route # 3
Route # 4

The School Division Website has a great school bus feature. On the home page you will notice a little green school bus in the header. Green means all buses are running on time. Yellow means one or more buses have been delayed. Red means one or more buses have been cancelled. If you click on the bus you will have a list of buses with the yellows and reds at the top of the list in numerical order.



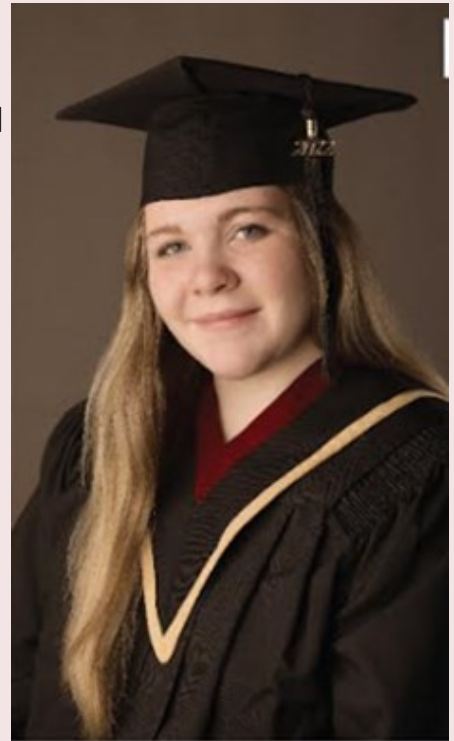
We also update Facebook (PLPSD Transportation Department) and Twitter (PLPSD_Transportation) when buses are running late or cancelled. Please follow us.

In the near future we will have a text, phone call, e-mail option for updating parents on bus status. If you get a text saying it is from the Portage School Division and to reply YES to continue to receive notifications, please know that it is not a scam and you need to reply YES. If you do not reply YES then you will not receive future text notifications of your student(s) bus status.



Thank you to everybody who completed the PCI School Survey. We have already started to implement some of the suggestions from the survey such as adding debit machines for purchases at our canteens.

One of the major changes from the survey will be changes to our Grad gowns. This year PCI will be switching to black gowns and caps with maroon and gold stoles and tassels to honor the history of the amalgamation of Arthur Meighen High School and Portage Collegiate Institute.



We will continue to look at the survey and use the feedback that was provided to help improve PCI.

Our prize winners will receive a PCI Sweatshirt or Hoodie from Locker to Locker.

Thank you to everybody who completed the survey. The winners of the prize draw are:

Pam Hedrick	parent
Jesse Shorting	Grade 9
Camille Fagnan	Grade 9
Jamie Klassen	Grade 11
Idalia Waldner	Grade 9

Prizes can be picked up at the PCI Main Office.

Help your friends!

Report Student Concerns Quickly! All reports will remain anonymous


PCI Anonymous Reporting

Let us know!



Be proactive! or go here: bit.ly/pcianon

You deserve to feel safe!

Post Secondary Education and Career Readiness


Thursdays Jan. 26-Mar 16
7-8:30pm
15 Tupper St. S
BBBS Office

Transportation available if required
Students 14-22

Explore career options, resume building, financial literacy, scholarships and more in a fun interactive setting


To Register contact
bbbscentralplains@bigbrothersbigsisters.ca
204 857-4397

If registered before Dec. 31st your name will be entered in a draw for a prize



Prairie Sounds Festival is back!

April 17 - 20, 2023



If you wish to register your teen in Piano, Voice, Musical Theater or Speech (public speaking, poetry or prose readings) classes, registrations will be available on www.prairiesounds.ca starting Monday, January 16.

The festival is a great chance for students to perform for an audience, receive constructive feedback on their performance, and win award money to help with their chosen art form.



PCI Semester 1 Exam Schedule

	Mon. Jan. 30	Tues. Jan. 31	Wed. Feb. 1	Thurs. Feb. 2	Fri. Feb. 3
	Day 2	Day 1	Day 2	Day 1	Day 2
9:00-11:30	English Trans 30 English Lit 30	Pre-Cal Math 30 Applied Math 30	Biology 40	Chemistry 30	Physics 30
1:00-3:30	English Trans 40 English Lit 40	Pre-Cal Math 40	Biology 30	Chemistry 40	Physics 40

All exams will be written in the East Gym.

The final day for Gr. 11 & 12 classes will be Friday, Jan. 27. During the exam week teachers may have Gr. 11 & 12 students come in who are at-risk or need to follow-up on missed learning opportunities.

The final day for Gr. 9 & 10 classes will be Wednesday, Feb. 1. Teachers may have Gr. 9 & 10 students come on Feb. 2 & 3 who are at-risk or need to follow-up on missed learning opportunities.

All exam conflicts are to be reported to the Main Office prior to the exam date.

Semester 2 starts on Monday, Feb. 6. Semester 2 timetables are scheduled to be sent out on Friday, Feb. 3 or can be picked up at the school on Monday, Feb.6. Report cards for Semester 1 will be sent out the week of February 21 to 24.